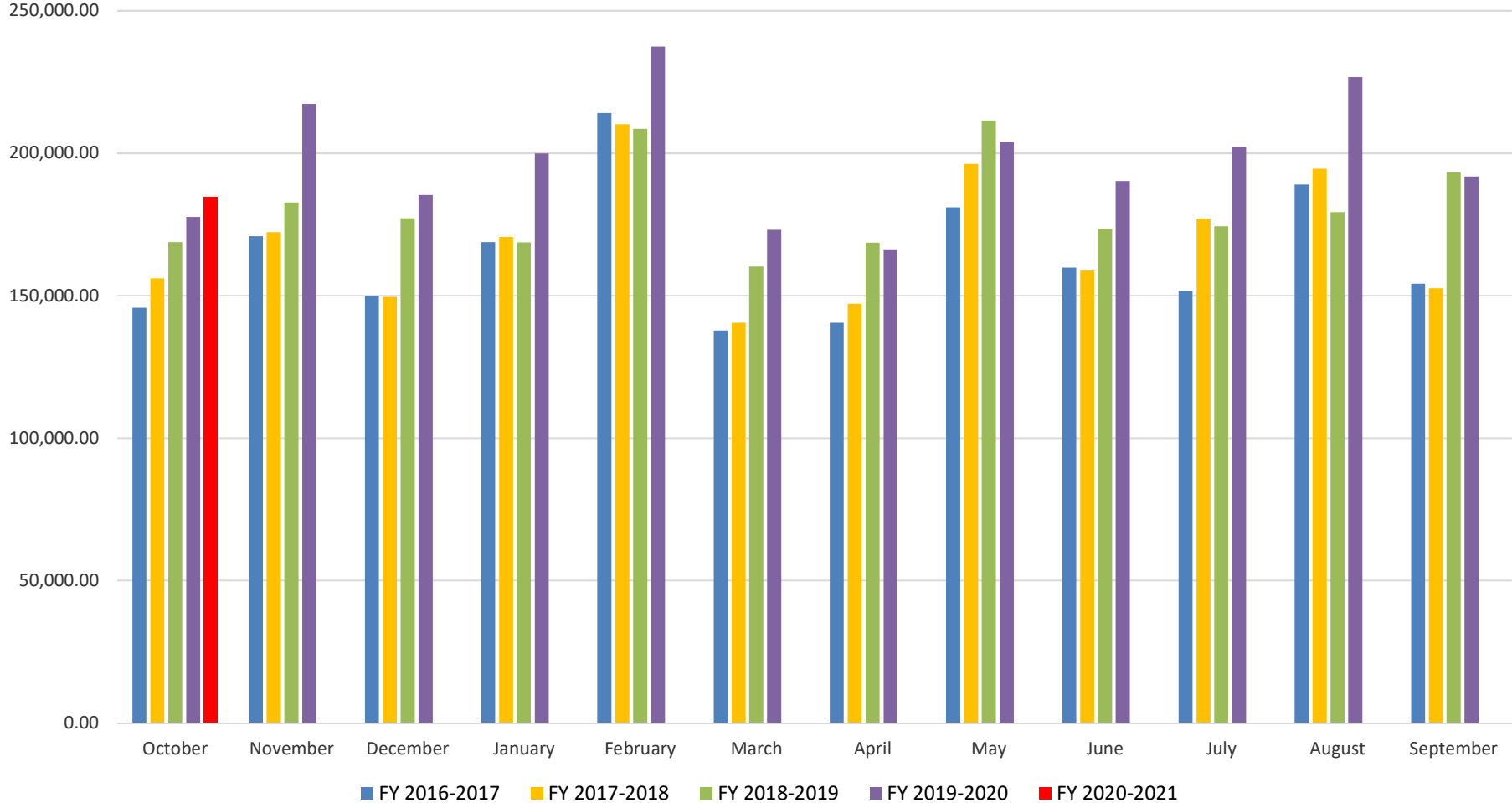


CITY OF MINEOLA
Monthly Sales Tax Trend Analysis



MINEOLA SALES TAX HISTORY

10/8/2020

<u>Fiscal Year</u>	<u>October</u>	<u>November</u>	<u>December</u>	<u>January</u>	<u>February</u>	<u>March</u>	<u>April</u>	<u>May</u>	<u>June</u>	<u>July</u>	<u>August</u>	<u>September</u>	<u>Total</u>
1987	0.00	0.00	0.00	11,820.86	58,965.92	19,053.98	20,166.57	36,243.39	22,759.30	23,911.69	38,829.99	25,690.32	257,442.02
1988	28,158.20	34,890.74	21,763.71	21,855.23	43,421.29	18,004.99	18,758.11	34,266.08	25,607.97	22,093.13	36,694.12	24,002.11	329,515.68
1989	23,280.26	38,910.28	22,120.04	22,020.91	76,152.76	19,458.28	18,449.01	36,388.92	24,226.83	22,712.84	37,409.41	23,373.08	364,502.62
1990	23,007.91	38,661.34	23,453.15	24,407.80	46,166.72	22,068.55	21,171.00	38,944.73	25,718.03	29,949.26	45,390.18	25,232.83	364,171.50
1991	27,831.08	39,973.63	27,319.08	29,422.26	50,798.70	22,476.99	26,588.53	41,201.72	28,472.68	30,797.56	42,264.18	31,449.26	398,595.67
1992	29,806.10	43,153.94	28,759.20	31,031.77	48,913.21	28,557.05	29,901.59	43,496.49	35,269.62	33,922.68	48,186.37	36,293.63	437,291.65
1993	36,850.65	49,335.03	34,919.70	46,652.58	85,800.97	38,886.43	35,415.65	58,100.51	44,752.66	45,449.35	60,748.17	47,553.30	584,465.00
1994	44,941.28	59,602.62	44,976.74	50,762.50	75,389.69	39,303.21	42,396.25	59,050.79	47,296.25	50,526.23	64,772.46	46,035.88	625,053.90
1995	47,982.00	59,277.55	48,317.71	53,611.55	80,574.37	41,834.08	43,904.98	57,627.24	51,272.91	52,737.59	62,531.85	49,996.55	649,668.38
1996	46,690.53	59,869.72	43,717.49	52,383.43	69,730.65	46,684.61	46,527.48	57,198.33	54,966.46	51,899.98	60,743.93	77,757.39	668,170.00
1997	70,918.19	90,111.17	80,002.78	76,564.26	107,674.10	64,598.79	61,440.29	93,506.56	77,648.05	77,942.41	93,977.21	82,852.98	977,236.79
1998	76,677.01	93,251.59	78,947.72	78,974.14	124,633.01	70,933.05	72,902.45	93,783.95	88,313.65	90,319.28	105,858.27	83,722.98	1,058,317.10
1999	77,739.81	98,183.35	84,836.87	79,005.53	131,252.60	78,568.96	77,379.27	106,894.78	87,249.67	95,549.77	116,946.27	96,749.31	1,130,356.19
2000	80,138.56	92,819.16	103,811.56	91,187.02	126,919.58	89,731.25	87,146.22	111,900.13	87,831.46	94,430.24	109,304.87	89,994.04	1,165,214.09
2001	88,880.56	109,848.92	84,910.45	92,998.82	128,933.94	84,432.97	84,348.92	111,218.06	101,261.49	95,030.97	114,009.29	96,544.27	1,192,418.66
2002	93,400.27	110,269.10	97,617.68	94,996.46	143,376.87	83,633.91	85,853.45	112,301.43	105,171.71	106,674.15	112,870.45	93,792.89	1,239,958.37
2003	100,695.62	100,968.66	94,252.41	99,690.97	140,933.56	84,851.10	86,654.06	111,695.73	100,395.51	137,988.41	117,717.30	98,862.75	1,274,706.08
2004	97,384.25	116,521.70	95,452.87	101,835.35	144,168.91	91,663.23	97,215.98	126,225.48	103,597.11	110,378.04	141,172.69	106,391.22	1,332,006.83
2005	96,473.87	122,595.42	94,840.50	107,337.34	146,612.00	93,923.61	98,207.55	126,741.44	106,176.37	109,335.56	132,701.05	100,885.00	1,335,829.71
2006	114,406.40	112,866.93	100,323.68	108,055.36	133,006.74	95,665.60	100,603.01	114,548.06	102,744.24	109,622.58	126,420.45	107,164.86	1,325,427.91
2007	102,867.87	129,214.82	97,933.07	111,981.72	154,130.31	98,246.20	104,898.68	142,642.49	108,850.87	115,611.74	131,238.97	123,005.55	1,420,622.29
2008	120,766.50	134,286.11	122,928.05	120,843.44	166,029.62	110,484.30	110,631.12	136,226.83	112,340.07	124,359.48	146,548.31	128,187.93	1,533,631.76
2009	114,265.32	128,256.81	110,765.75	113,003.53	153,800.69	98,677.13	102,544.65	127,721.50	110,621.47	110,052.71	142,690.72	131,157.60	1,443,557.88
2010	110,148.75	127,856.56	105,197.50	104,271.85	149,877.39	92,595.31	98,247.94	139,299.55	117,882.26	110,404.20	129,126.80	105,571.49	1,390,479.60
2011	105,421.75	135,467.14	103,937.15	119,448.14	148,993.76	96,444.31	100,146.89	132,590.25	110,958.99	112,872.29	136,342.31	125,667.27	1,428,290.25
2012	118,231.97	138,691.97	118,868.91	127,562.34	173,662.29	113,944.54	129,541.34	156,158.30	131,445.15	139,637.22	156,391.54	129,931.34	1,634,066.91
FY 2012-2013	143,567.07	147,966.00	134,015.95	141,646.69	175,116.38	115,318.03	128,601.31	155,973.41	131,100.87	139,522.67	162,750.17	141,407.41	1,716,985.96
FY 2013-2014	131,326.81	149,155.38	136,037.89	134,795.69	177,761.48	116,856.71	126,836.76	159,075.94	139,158.00	139,759.88	160,817.94	140,715.57	1,712,298.05
FY 2014-2015	131,401.76	159,860.66	134,715.02	142,483.03	185,232.86	125,414.47	126,317.84	162,809.81	141,267.67	139,285.25	167,661.89	143,272.37	1,759,722.63
FY 2015-2016	140,441.75	169,255.52	141,183.71	143,452.56	196,004.05	124,804.69	135,963.38	177,566.39	142,502.24	145,941.87	179,459.05	152,771.03	1,849,346.24
FY 2016-2017	145,767.07	170,836.40	149,987.51	168,745.46	214,097.00	137,809.39	140,454.35	181,011.60	159,863.18	151,629.00	188,942.46	154,168.73	1,963,312.15
FY 2017-2018	156,026.00	172,249.09	149,634.36	170,559.35	210,200.21	140,490.57	147,103.23	196,263.80	158,799.96	177,063.01	194,564.42	152,643.77	2,025,597.77
FY 2018-2019	168,748.37	182,672.23	177,221.17	168,709.01	208,515.46	160,254.95	168,642.39	211,521.57	173,463.54	174,283.77	179,334.57	193,250.71	2,166,617.74
FY 2019-2020	177,613.04	217,306.22	185,303.61	199,920.62	237,363.96	173,151.60	166,231.34	203,954.52	190,197.77	202,276.32	226,751.20	191,840.43	2,371,910.63
FY 2020-2021	184,554.77												184,554.77
monthly inc	6,941.73												
%	3.91%												

August September October November December January February March April May June July
 Alcohol sales began June, 2011- first sales tax collected August 2011
 Jalapeno Tree opened August 2013- first sales tax month October 2013
 Whataburger opened 11-8-14/Beall's 12-14
best month Increase over last YTD **3.91%**
 Hibbitt & Dollar Tree opened end of March 2017 2018-2019 Sanderson Farms Construction/Autumn Winds Construction